

2020 *Visitors Guide*

STAPLES ~ MOTLEY ~ PILLAGER ~ LINCOLN LAKES AREA

Staples World
Free Issue



The
Sign of
Success.



Sandy Knosalla
218-296-1111





Get out & Play!

Our beautiful, Joel Goldstrand designed 18 hole golf course provides a great experience for all play levels. Located along the Crow Wing River and nestled in the north woods, there's a great round of golf waiting for you!



only
\$65 GOLF FOR TWO
includes a cart!

only
\$120 GOLF FOR FOUR
includes 2 carts!

Please use code SQVG2020 when booking your tee time.



27923 McGivern Dr • Staples, MN • (218) 894-9907 • www.VintageGolfClub.com

The sleeping giant in downtown Staples

The flat brick walls on the mammoth building in downtown Staples give little indication to the historical significance contained inside.

"You are standing in a sleeping giant," artist Carter Averbeck told a crowd at a tour of the Batcher Building Opera House. Averbeck is an art caretaker and is part of a group attempting to restore the building to its original majesty.

He said he has restored other opera halls, and this is "the best preserved I've seen."

The Opera House is authentic, with the original patterns and paintwork still untouched, including an original fresco created by a skilled painter whose name has been lost to history.

Averbeck said he will be able to restore the building to the exact patterns and colors of the original artwork. "There are angels and cherubs flying all around," said Averbeck, but the face of the main subject is now wiped out by plaster disintegration.

The original art includes ornate stenciling decorating almost every surface, taking the form of floral patterns,



cartouches, and other figures. One interesting form appears to be two dragons facing each other.

A nonprofit has been formed to preserve the building and turn it into a regional performance hub, and gathering place for events and arts. For more information, contact Melissa Radermacher at mradermacher@ci.staples.mn.us or call 218-894-2550.

History

The Batcher Block Opera House was built in 1907, one of many opera houses built in small towns across Minnesota and the United States. Primarily supported by Staples' connection to the railroad, the building has served many uses over the past 113 years, from opera hall to roller skating rink to antique and department store. The building is listed on the National Register of Historic Places and is one of only 13 opera houses of its kind in the United States.

Batcher's Opera House was officially unveiled on November 21, 1907. The auditorium was christened with Richard Mansfield's "Prince Karl," performed by the Mack-Leone Company, which featured actors Willard Mack and Maude Leone.

Since then many forms of entertainment have crossed the stage, including "Polly of the Circus" in 1913, per-



Transported back in time

Locals gather at an open house to experience the qualities of the Batcher Building

formed with horses, ponies, dogs and other animals.

In more recent times, comedian Louie Anderson per-

formed a show, as did Mickey Rooney and the Lamont Cranston blues band.



Ghostly images from 1907

The original fresco painted on the ceiling above the stage at the Batcher Block Opera House.

Staples World

The Staples World, your community newspaper since 1890, is pleased to have prepared this visitors guide to showcase all the wonderful opportunities our area has to offer. If you have a story idea or calendar item for our next issue or if you would like to advertise your business or event, please contact us. We'll also be glad to get more copies of this guide to you for your customers and visitors. Thanks for reading!

Mark Anderson, Managing Editor

224 4th St. NE, P.O. Box 100, Staples, MN 56479
218-894-1112

www.staplesworld.com • editor@staplesworld.com



Staples World

Cover photo: Mark Anderson, Staples World editor
Most of the photos in this guide were taken by Staples World staff. If you would like to follow the community year round, subscribe at www.staplesworld.com or stop in to see us and tell us your local stories.

We have a lot to offer, everyone is welcome!

Local road trips

Scenic drives, area sightseeing

Welcome to the Staples/Motley/Pillager/Lincoln Lakes Area Visitors Guide. Stories feature some of the recreation, arts and culture opportunities in the area.

In this year of COVID-19, many of the regular area events are cancelled or reduced to social distancing.

To keep up with events, check out the Staples World newspaper, go to staples-world.com or discoverstaplesmn.org.

For this year's visitor's guide, we will concentrate on aspects of the area that are open for everyone, such as road trips, parks and nature areas.

This region of central Minnesota is known for outdoor opportunities through

lakes and forests. There are two eighteen hole golf courses, one north of Staples, one south of Motley.

The Crow Wing River flows through Staples, Motley and Pillager, providing one of the best rivers in the country for tubing, canoeing, kayaking, swimming and fishing. At Motley, the river is joined by the Long Prairie River. The dam at Pillager creates a recreational area.

The resorts of the Lincoln Lakes area are featured in this Visitors Guide, and there are public water access on many of the lakes as well. Many restaurants are scattered around the lakes area, and throughout Staples, Motley and Pillager.

Get to know the landscape of central Minnesota by taking some of these off the freeway drives.

Many of the state's biomes can be found in this area, from pine forests, prairies, birch stands, deciduous forests, wetlands, lakes and rivers.

Look for tamarack trees that grow near wetlands in the area. The needles on these pine trees turn bright yellow before they fall like leaves in the winter.

The northern wetlands can be a good place to find the Minnesota state flower, the Showy Lady's Slipper, found in swamps, bogs and damp woods. If you find one, take a photo because it is illegal to pick or transplant the flower in Minnesota.

Following are some of the local drives people might find interesting:

From Pillager

One of the most scenic drives in the state is the winding Beauty Lake Road through Pillsbury State Forest. Feel the essence of the trees while driving through thick forest, with great views of lakes and ponds, plus a chance to witness forest wildlife. To get there, drive north on County Road 1, past Pillager Lake, and

find the entrance to the forest.

The Pillager Dam blocks the Crow Wing River south of the city, creating a beautiful Lake Placid upstream from the dam, and a site for fishing below the dam. Drive along Lake Placid Road and then south to the dam on Pillager Dam Road.

From Motley

Take Azalea Road along the south side of the Crow Wing River, all the way to Pillager. Another option is to turn south on Bugle Road to get to the Lincoln Lakes area.

From Staples

Tour the countryside south of Staples to view rolling hills with cattle pastures, prairies, forests and Amish farms, some with products for sale. One route suggestion is from Highway 210 west, take County Road 11 south to Clarissa.

Head north of Staples on County Road 30 to get to Wahoo Valley and Cottingham Park, both on the Crow Wing River. Wahoo Valley restaurant serves food and provides tubing trips on the river. Cottingham Park is a Wadena County park that has primitive camping and river access.



Colorful landscapes

Autumn colors abound in this area, with a variety of trees that produce all kinds of colors.



Staples is a regional knowledge hub

With multiple regional organizations based in Staples, the community has become a regional and state-wide leader in the areas of regional education, government, economic development, arts, health and knowledge.

Regional institutions include Region Five Development Commission, Sourcewell, Central Lakes College, Five Wings Arts Council, Lakewood Health System and the Staples-Motley School District.

The Good Life

Region Five Development Commission is promoting the area with The Good Life campaign, highlighting all the recreation, industry and employment in Cass, Crow Wing, Morrison, Todd and Wadena counties.

Region Five has developed a comprehensive regional planning process for community development, economic development and transportation.

Better Government

Sourcewell is a service cooperative that helps government, education, and nonprofits work more efficiently.

Sourcewell offers programs for teachers, administration and students to learn and enhance their skills. The campus in Staples is the axis for many conferences and training sessions. Sourcewell also provides professional services and equipment for schools and local governments to share.

The cooperative purchasing department allows schools, government and nonprofits to purchase equipment at a low bid that has undergone a rigorous bidding process. Sourcewell's cooperative contracts facilitate \$3 billion worth of annual purchases for 50,000 members throughout the country.

Higher Education

The Staples Campus of Central Lakes College is home to many programs, including heavy equipment, robotics, machine tool trades, CNC technology, mechatronics, diesel technician, nursing, medical assistant, phlebotomy, and agriculture science.

The college is home to AgCentric, one of the Minnesota State Centers of Excellence. AgCentric connects agriculture and education for students and farmers around the state.

Promoting the arts

The Five Wings Arts Council exists to support arts creation, appreciation, and education through grants and technical assistance that enhances the quality of life in Cass, Crow Wing, Morrison, Todd and Wadena Counties of Minnesota.

They provide grants for arts organizations, community arts projects, school arts and individual artists. They also host arts workshops throughout the region.

For more information, go to fwac.org or call 218-895-5660 or 877-654-2166. Mark Turner, Executive Director, can be contacted at mark.fwac@arvig.net. Vicki Chepulis, Grants Coordinator, can be contacted at vicki.fwac@arvig.net.

Community health care

Lakewood Health System is an independent hospital and clinic that offers personalized medical care and regional community health programs.

Lakewood Engage has started numerous food access initiatives in the area, including a Food Farmacy, food programs for students and seniors, and a farmers market held Thursdays from 2 to 5:30 p.m. In 2020, the farmers market has switched locations to the parking lot at Highway 10 and 5th Street NE in Staples.

Comprehensive school

Staples-Motley School District draws students from a wide area covering parts of four counties and offers comprehensive education for students from a variety of backgrounds. The school is known for a diverse set of classes including college credits, support for students of all abilities, extensive fine arts and extra-curricular offerings, and partnerships with the community. Many of the partnerships are with the other regional entities in Staples.



Sourcewell shares experience in education

Sourcewell's annual Workforce Conference is an example of the many training sessions and educational opportunities that go on in Staples. This conference brings educators and business people together to provide best practice examples.



Proud to call Staples home

Growing a professional workforce focused on service to schools and government.
Find your next opportunity at sourcewell-mn.gov/careers.

Ag & Energy Center's annual Field Day

Central Lakes College's Agriculture and Energy Center is a leader in agriculture research and innovation. Every year they invite the public to come and see the cutting edge of agriculture.

The event is held near the end of August. Check clcmn.edu for updates on the status of Field Day this year.

Visitors will be able to try out the latest in agriculture technology including the newest tractors and farming with drones.

Research on field crops, specialty crops and energy crops will be on display. Water quality research, irrigation technology and local foods integration will also be part of the field day. Researchers will give tours of forage and pasture sites.

Children's programs will allow them to ride in big machinery and there will be children's programs to help

them learn about growing food.

It is unique for a two year college to operate 2,000 acres. Many agriculture experiments are conducted every year on crops such as barley, kidney beans, corn, soybeans, sweet corn, canola, grapes, apples and various horticultural crops. One of the new experiments is growing kernza, an emerging grain used both for food and for fuel.

The college allows the public to pick their own produce from some of the research crops, including sweet corn, blueberries, potatoes and apples.

The farm was founded in 1968 as a research farm. The primary focus in its early years was irrigation, as the soils in this area have a very low water holding capacity and tend to be five days away from a drought with-

out precipitation. Irrigation technology is still a part of the program, as well as research focused in water quality monitoring, precision agriculture, nitrogen management, alternative energy, crop variety trials and many local foods demonstrations.

Key to the Ag Center's operation is the many collaborators, including industry, universities and technical colleges as well as local businesses and area producers.

AgCentric

Central Lakes College was named a Minnesota State Center of Excellence in Agriculture. The program, titled AgCentric, is also at Ridgwater Collage and Northland College.

AgCentric delivers advanced agricultural knowledge and training throughout Minnesota, connecting students, industry and education.

To learn more call the CLC Ag Center at 218-894-5141.



Apples

CLC specialty foods instructor Thaddeus McCamant showed one of the many varieties of apples at the 2017 Field Day.



Field Day

Central Lakes College researches growing grapes in northern climates. Pictured, Field Day tours include the Ag Center's vineyard by winemaker Dennis Drummond.



Big machines

The Central Lakes College Ag & Energy Center uses the latest technology for agriculture. It is the only college that runs a self-supported farm on campus.

Living Legacy Gardens offer serenity

There's a reason cliches stick around long enough to become cliché. They carry a kernel of truth or some good advice that bears repeating.

Like "Stop and smell the roses."

And the hyacinth.

And the fragrant herb garden.

You can find all this and more at Living Legacy Gardens.

These public gardens are located at the Central Lakes College Ag and Energy Center just a half mile west of the college's main Staples campus. The campus is two miles north of Staples on County Rd 30 (Airport Rd). The gardens are also a destination on the Staples bike trail.

The ten acre garden is designed to offer lifelong learning on horticulture related subjects as well as to demonstrate plants suitable for growing in hardiness zone

three.

The park-like setting of the garden, orchard vineyard and native prairie provides several serene spots to relax and enjoy the beauty of nature.

The gardens currently demonstrate annuals and perennials for sun or shade, herbs, fruits and water gardening. Various landscaping styles are used to show visitors options for their own use. Other features include children's and fairy gardens.

Donations are appreciated - monetary or service. Volunteer days are held every Tuesday from 9-11 a.m. from May through September, weather permitting. Everyone is welcome, regardless of age or experience. Call 218-296-2795 for more information.

August is the peak time of beauty at the gardens. The gardens are always open and constantly changing. Come



a take a walk, sit by the pond or in the gazebo or in the shade garden. Enjoy the serenity and beauty to be found here summer and winter. Let your stresses melt

away.

We have the perfect place for you to stop and smell the roses, to enjoy the stillness.

Central Building Supply Can Help You with All Your Building Needs!



- New Home
- Remodel
- Garage • Post Frame Building
- Decking
- Siding • New Windows & Doors
- Design Service
- List of Area Contractors



CENTRAL BUILDING SUPPLY



827 2nd Ave. NW, Staples
218-894-3794
Fax 218-894-3935
www.cbsstaples.com

ERNIE'S

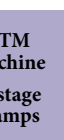
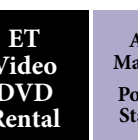
GROCERY • CONVENIENCE • GAS • LIQUOR • TOBACCO

Your Friendly, Hometown Store for Fresh Meat, Produce, Bakery and Much More!



1230 Highway 10 East, Staples, Minnesota 56479 Phone: 218-894-1072

Store Hours: 7 a.m.-10 p.m.
7 Days a Week



We accept:



Staples Parks have many opportunities

McGivern County Park is home to the sportsmen's Club and shooting range, offers picnic areas, a boat launch, and is often the starting point for tubing and canoeing on the Crow Wing River.

The Vintage at Staples is a beautiful, Joel Goldstrand designed, 18-hole public golf course great for all skill levels. Clubhouse offers food and beverages.

Living Legacy Gardens is maintained by master gardeners and Central Lakes College agricultural students. It showcases landscaped areas of native flowers and plants along with children's gardening plots.

Wilson Park offers a sand volleyball court, basketball court, picnic areas and playground equipment.

Lakewood Park has a large playground, a picnic shelter with tables, modern handicap accessible restrooms, and sand

play area.

School District Field area includes baseball, softball, and football fields; tennis courts; running track; and the elementary playground.

Odden Park is a great place to stretch your legs and enjoy a picnic.

The Staples Community Center houses a competition-length indoor swimming pool, fitness center, indoor basketball court, senior citizen center, and community meeting rooms.

Northern Pacific Park offers a large playground area, tennis court, a natural creek with bridge, and picnic areas. Enjoy free "Music in the Park" concerts during the summer.

Dower Lake Recreation Area has it all: the state's longest fishing pier (612'), softball fields, disc golf course, basketball court, swimming beach, horseshoe pits, sand volleyball courts, picnic shelter, 45-unit campground, and picnic areas.

Lincoln Park has playground equipment, a basketball court, and picnic areas. An ice skating rink is located nearby during winter months.

Veterans Park was built to honor our community's veterans. It features memorial pavers and benches, 80' flagpole, and branch service flags.

Pine Grove Park is tucked among a white and red pine forest. This park features a large shelter with kitchen and restrooms, two rustic picnic shelters, a playground, disc golf, horseshoe pits, picnic areas, ponds, and nature walking. Pine Grove Field is also the home of our amateur baseball team, the Lumberbats.



Dower Lake: Fishing, camping, recreation

Dower Lake Recreation Area is a city park west of Staples along Thunder Road that features camping, swimming, fishing and softball fields. There is also a disc

golf course, basketball court, sand volleyball court, picnic tables and picnic shelter.

The park has brand new seasonal camping sites for long term stays.

No visitor to Dower Lake can miss the 612 foot fishing pier, noted as the longest such pier in Minnesota. The

new pier replaces a historic pier that was originally used by railroads to fill their steam engines with water.

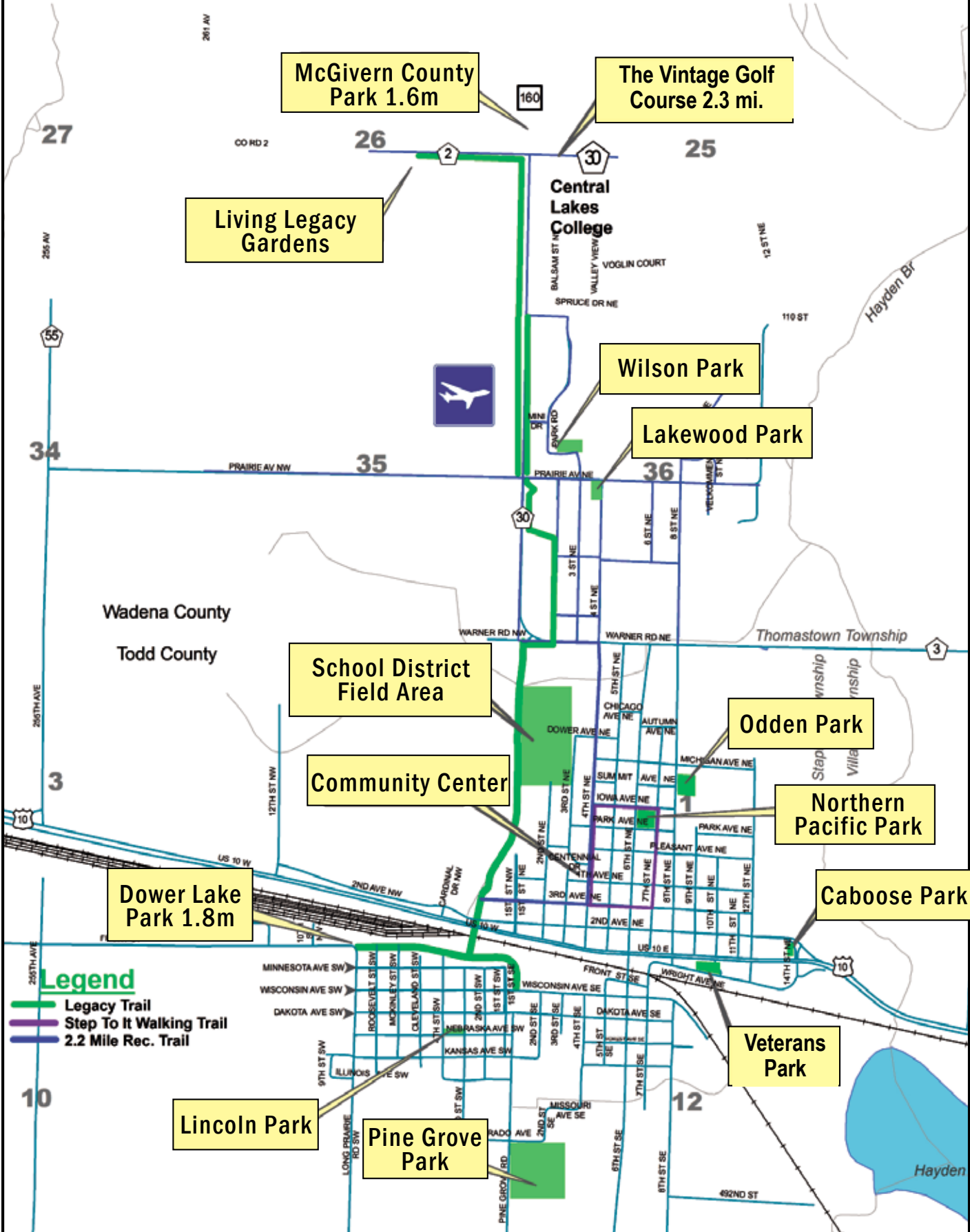
Plans are being made to turn Dower Lake Recreation Area into a regional park by adding hiking trails, biking trails, birdwatching and more softball fields.



Relaxing at Dower lake

Urban and rural dwellers alike seem to gravitate to the lakes of northern Minnesota during the summer months. Whether from the longest pier in Minnesota or from the lake, fishing is one popular past time. Dower Lake Recreation Area also offers boating, swimming, disc golf, traditional and seasonal camping. Campsite reservations can be made at staples.govoffice.com or 218-894-2553.





Pine Grove Park: trees, picnics, baseball

Now step forward 100 years, and we are still singing the praises of the ladies of the Staples Civic Association for their foresight in preserving this stand of trees.

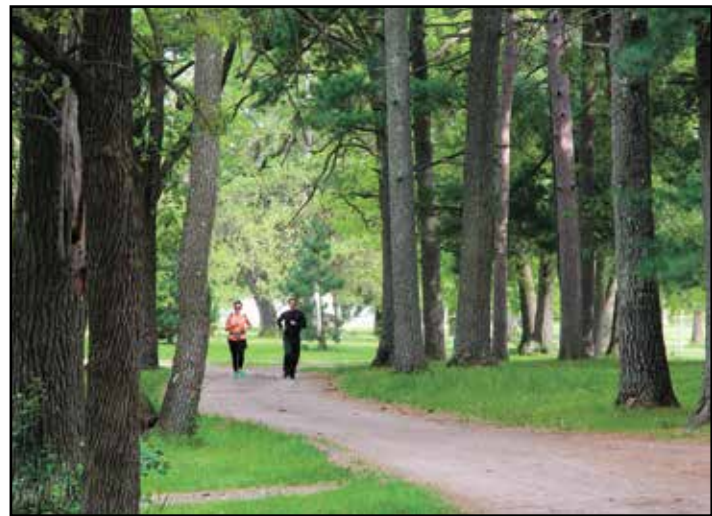
With a playground, disc golf course, ponds and picnic shelters, Pine Grove Park is a popular spot for picnics, family reunions, weddings and other events. The Staples Amateur Baseball As-

sociation has rennovated the baseball field so that the Staples Lumberbats, the town amateur league team, can hold their home games at the field.



Enjoying the baseball game

Home games for the Staples Lumberbats are played at Pine Grove Field.



Strolling in the tall pines

The tall pine trees at Pine Grove Park provide a magnificent backdrop for walking or running.

North Pole at Pine Grove Park

Christmas in Staples

Pine Grove Park in Staples will become the North Pole for the month of December as the park is transformed by lighted displays.

The park will open weekends in December, starting Nov. 30.

A full day of special

events for "Christmas in Staples" will be Saturday, Dec. 7.

Events will be held at the Staples Community Center, Staples Library and throughout downtown. Children can pose with Santa for photos and can take part in craft activities.

The schedule is subject to change and other events and features may be added. Check discoverstaplesmn.org for updates.



Discover our open air art gallery

Barn Quilts of Central Minnesota

varies but usually they measure 8' x 8' when on a barn, 4' x 4' on a smaller building, and even 2' x 2' for a garden post or a business. Most have a story because they are created for a specific location.

The Central Minnesota Trail can be broken into five distinct areas around Staples and Motley. The locations and a map can be found on Facebook and on their website - barnquiltsmn.org. The web site will list the address for each quilt on the trail.

A full color brochure can be printed from the website or one can be requested using the contact form. For more information email barnquiltsmn@gmail.com or call 218-894-2906. They can also be picked up in Staples at the Historical Depot on Hwy. 10.

Some barn quilts have been installed since the bro-



At the Care Center

This 2' x 2' barn quilt with a tulip design is installed in the raised flower bed near the main entrance to the Lake-

wood Care Center on Prairie Ave. NE in Staples. Closer to the door is another quilt near a bench. Altogether, four barn quilts were created by the residents who said they "wanted people to know that even into their nineties they can still do something for the community!" These are not listed on the barn quilt trail because you are unable to drive by it, but you can park and walk to the entrance.

chure was printed and more are being created so the website will have the most recent information.

The Central Minnesota Trails is now also listed on the American Barn Quilt

Trail, a collection of the hundreds of painted quilts found in many states and even Canada. The web address is <http://barnquiltinfo.com/map-MN.html>.

95% of our patients are willing to recommend us to their friends and family.

Whether you're seeking primary care, your annual physical, cancer care, surgery, rehabilitation after an injury or a number of other services at our clinics, we will not only devote ourselves to improving your health; we will be your trusted partner for life.

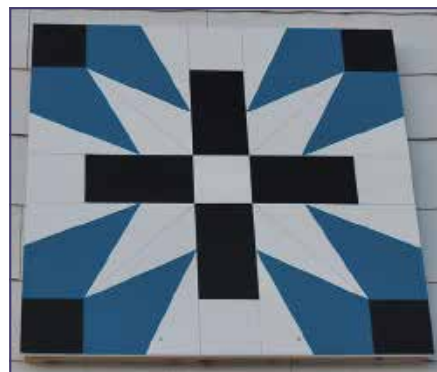
Call 218-631-3510 to schedule an appointment.



“ We are so thankful for the kindness you showed that day. You made a huge difference to someone who truly needed it!

Karen, DAVID'S MOM

Amber Block, LPN, David and Karen



Full-Service Business Accounting



- Income Tax Service
- Accounting • Auditing
- Financial & Business Planning
- Bookkeeping • Payroll

MAYER, PORTER & NELSON, LTD.

Certified Public Accountants

Charles Mayer, Keith Porter and Julie Nelson

www.mpn-cpa.com • 218-894-1399
133 4th St. NE, Staples, MN 56479

TCHC.org

HOSPITAL Wadena

CLINICS Bertha Henning Ottertail
Sebeka Verndale Wadena

 **Tri-County Health Care**

Your trusted partner for life.

Biking/walking trail runs to gardens

The Legacy Bike Trail is now extended to the Living Legacy Gardens, now fully paved from the highway overpass

and along Airport Road.

Built in 2012, the trail runs from the south side of Staples, over the highway

and railroad track overpass, past the high school athletic fields to Warner Road. The trail continues through the woods behind Jon's Family Foods, along Airport Road and out to Living Legacy Gardens at Central Lakes College.

The trail will constitute nearly four miles of stand-alone bicycle trails in Staples.

The trails can be accessed from many points, including the Living Legacy Gardens on the north end of the trail or Prairie Ave. and Warner Rd. NE on the north side of town. From Highway 10, bikers can stop at the Staples Depot and ride to the south side trail entrance on Wisconsin Ave. or park downtown and pick up the trail from the 3rd Ave. NE entrance ramp.



live first

www.firstintlbank.com

Motley
218-352-6284

Staples
218-894-1522



Singing along the trail

A bluebird perches on its house near the bike trail in Staples.



Tranquil scene as Veterans are honored

The walkway to the Staples Veterans Park and the new granite wall was lit by luminaries, honoring the veterans who are listed on pavers surrounding the 80 foot flag pole and the branch of service flags at the park. (Photo by Ken Klose)



STOPPING GROUNDS
213 4th St. N, Staples 218-895-3599

☕ Coffee ☕ Lattes ☕ Lunch Items ☕ Baked Goods
And Much More!

Follow Us On Social Media:

 Stomping Grounds
  @stomping_grounds_218

Mon.-Fri. : 6:30 AM - 5 PM Sat. : 7 AM - 2 PM Sun. : Closed

The Strength of Community



UNITY BANK

www.unitybanking.com

Member  **FDIC**  **LENDER**

Crow Wing River: float, fish, camp

The Crow Wing River is one of the state's best wilderness routes for canoeists, according to the Minnesota Department of Natural Resources.

Every summer, thousands of canoes, kayaks and people on inner tubes paddle or float down the river, taking advantage of the many public water access points along the way.

The Crow Wing's crystal waters cut a gentle path rarely interrupted by rapids. Although the river is seldom more than three feet deep, it is nearly always deep enough for canoeing. Much of the river is flanked by thick forests.

The diversity of vegetation along

the river supports a wide variety of wildlife. Canoeists may see turtles, otters, muskrats, beavers, mink, raccoons, gophers, chipmunks, squirrels and rabbits. Bobcats and a small number of black bears also inhabit the river area. Eagles and great blue herons are fairly common as well.

Game species include white-tailed deer, ruffed grouse, woodcock and various waterfowl. The Crow Wing River supports only a limited number of waterfowl because of sparse aquatic vegetation and a lack of backwater areas.

Fur traders entered the region in the early 1700s. In 1792 the Northwest

Company established the Wadena Trading Post on the west bluff of the river at its junction with the Partridge River. There was considerable overland trade in the area by the 1800s. The Old Otter Tail Trail crossed the river near the Old Wadena post and was the main transportation route between St. Paul and Fort Garry in Winnipeg.

Remains of Native American presence mark the river corridor with Indian burial mounds at several sites along the river, including a site at River Mile 61.



Crow Wing River scenery

The Crow Wing river is a peaceful, cool, clean river, perfect for tubing, kayaking, canoeing and fishing.



**Jon's
FAMILY
FOODS**
A GENUINE DESIRE
TO SERVE OUR CUSTOMERS

***Fresh Baked Bakery**
***Produce *Dairy**
***Fresh Meat**
***Groceries**
***Hot Deli**

CLARISSA, MN
216 W. Main
218-756-3533
Hours: Mon.-Fri. 8 a.m.-8 p.m.
Sat., 8 a.m.-6 p.m.;
Sunday 9 a.m.-6 p.m.

STAPLES, MN
203 Warner Rd.
218-894-3360
Hours: Mon.-Fri. 8 a.m.-8 p.m.
Saturday 8 a.m.-6 p.m.;
Sunday 8 a.m.-6 p.m.


5% Senior Discount Mondays & Tuesdays.
We Accept Visa, Mastercard, Discover, E.B.T., WIC & Food Stamps

**RON BIEBIGHAUSER'S
NYHUS CHEVROLET/BUICK**

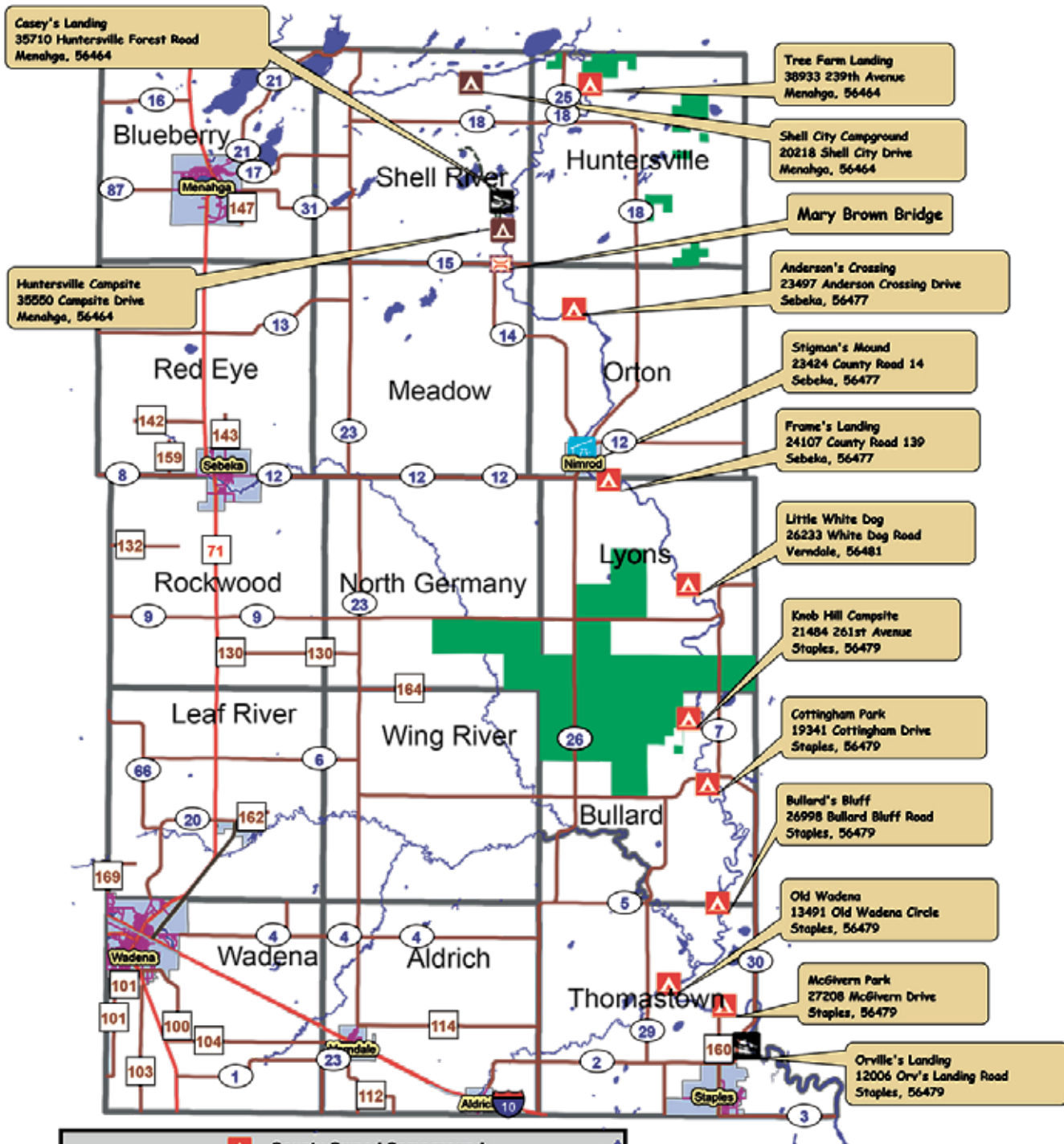
120 2nd AVE. E., STAPLES
218-894-1652 OR 1-800-622-8307

www.nyhuschevroletbuick.com

**•Service
Department**
•Parts
**•Collision
Center**



Wadena County Crow Wing River Campsites



N
 County Owned Campground
 County Owned Picnic Area
 State Owned Campground
 State Owned Landing
 Carry-in Access



Map Created By:
Gina Dahms-GIS Coordinator
Wadena County

Explore wilderness, history and a bog



Hike through the forest, learn pioneer history, visit the Crow Wing River and learn about the unique ecosystem of a bog, all in one place. Old Wadena County Park and campground is located four miles northwest of Staples, off County Road 29 (251st Ave.) and west on 140th Street.

The park is a combination of history and nature. It contains the original site of the city of Wadena, which is now 15 miles to the west of the park. Old Wadena also has a pioneer log cabin on the site and the remnants of an ancient ox cart wagon trail can still be found.

In 2013, the Old Wadena Soci-

On the Bog

A tour group learns about the Old Wadena Bog, including the bog plants and animals. The walk has informational signs that tell about the special ecosystem.

ety completed work on their bog walk, a boardwalk that meanders through one of the unique natural features to be found at the park. Located near the entrance of the bog walk, the "Old Warrior Tree" is a massive white pine that towers into the skyline.

Little Round Hill is the site of both a battle and a fur trading outpost. Archeological digs have confirmed that the site is a place where European and Native American cultures came together. A short hike into the Old Wadena forest leads to Little Round Hill, where a marker tells the story of a boy named Esh-ke-bug-e-coshe, who described a fierce battle on that spot where the Ojibwe, with help of guns from European traders, repelled 200 Dakota warriors.

Nature trails lead visitors through the forest and along the riverside at Old Wadena Park. The park is an entry point on the Crow Wing River canoe route.

Think Ahead

Protect your assets by making us your first line of defense against the unexpected.



Life~Home~Auto~Commercial-Cabins
Motorcycle~Recreational Vehicles

Orth Insurance Agency, LLC

Dan Orth, CPIA, Owner
Derek Orth, Agent

dan@danorth.us derek@danorth.us

Orthinsuranceagency.com

218-894-2525 ~ 218-894-3224 fax
227 4th St, NE, Staples

YOUR LOCAL APPLIANCE STORE

FREE Local Delivery, Set up, Removal & Recycling

SALES PARTS SERVICE FINANCING

WHIRLPOOL
AMANA
MAYTAG

- over 60 units in stock -

Staples

True Value

205 Warner Road - 1 mile N of HWY 10
Staples MN (218) 894-3263
www.staplestruevalue.com



Rendezvous offers a step back in time

'Chautauqua' is new feature

The 28th annual Old Wadena Rendezvous and Folklife Festival is a celebration through storytelling, theater, music, dance, and art of the region's past and of its rich cultural inheritance. The festival is held on the grounds of the beautiful Old Wadena County Historical Park on the banks of the Crow Wing River.

This outdoor event is traditionally held the second weekend in August. Check with the Staples World newspaper, staplesworld.com, or discoverstaplesmn.org to find out the status of this year's rendezvous.

Have you ever wanted to really practice the traditional arts that are demonstrated every year at the festival?

You'll have the opportunity as the Rendezvous introduces a "Chautauqua" on the Old Wadena Park grounds. This marks a new focus for the Rendezvous.

Wadena County constructed a permanent pavilion at the Rendezvous



Trying on Grandpa Whistler's fur hat

Five-year-old Kaiden Kessel of North Branch was born at Rendezvous time and grandpa Jim Whistler announced his birth to the crowd at the Rendezvous.

campground. With financial support from the Five Wings Arts Council and local businesses, the Old Wadena Society will provide the opportunity to learn and practice one of the arts showcased each year at the Rendezvous.

Practice will be limited to three different art forms and expanded in the coming years. All instruction will be under the guidance of master artists and artisans.

Those completing an apprenticeship (a minimum of 20 hours of instruction) will demonstrate their newly developed and strengthened skills alongside the master artists at the annual Rendezvous. We are calling this new part of the Rendezvous a "Chautauqua."

Get all the details on the society website, www.oldwadarenendezvous.org.

The weekend features a traditional Rendezvous Camp, naturalist interpretations of the park, musical entertainment and artisans, such as potter, blacksmith, lace maker, wood carver and more. Blue Frog Traders will also be there. Food and drink are available on the grounds.



CLC CENTRAL LAKES COLLEGE

Take a **BIG** step toward your future!

1830 Airport Road, Staples, MN 56479

218-894-5100 www.clcmn.edu

An equal opportunity educator/employer. ADA accessible.

City of Motley offers options in parks

A number of parks are available to the public throughout the City of Motley. They are listed below:

VETERANS PARK, located off Hwy 10 on Main St. E. offers a veterans memorial, shelter and a shady place to stop and relax.

MOTLEY PET STOP AND REC

AREA is located behind the BP station on Main St. E. and offers a dog park, tennis/pickle ball court, basketball hoops and ice skating with a warming house during the winter (a limited number of skates are available in the warming house for public use on a first come first serve

basis).

FARBER PARK, located on the 200 block of Cedar St. E., offers picnic tables and benches to relax.

CONVERSE PARK, located at 281 Beaulieu St. W., offers a baseball field, playground and skate pad with ramps for bikes, skateboards and roll-

erblades.

INDUSTRIAL PARK is located west of Curtis St. W. and offers a sliding hill during the winter. Other winter activities available in the city include a snowmobile trail. A map of the trail is available online at www.cityofmotley.com.



Skating: a winter favorite

If you enjoy ice skating, be sure to visit the Motley Rec Area just off Hwy 10 behind the BP station on Main St. In addition to the rink, skaters will find a warming house with a limited number of skates available for public use.



Pooches love Dog Park

The Motley Pet Stop and Rec Area is located behind the BP station on Main St. E in Motley and offers a dog park, tennis/pickle ball court, basketball hoops.





The Motley Rec Area is home to an ice rink during the winter months. It's located just off Hwy 10 behind the BP station on Main Street. In addition to the rink, skaters will find a warming house with a limited number of skates available for public use.

Saturday afternoon hockey game

Staples World

Subscription rates: \$41/yr: 4-County Area
 (Todd, Wadena, Morrison, Cass)
In-State: \$46
Out-of-State: \$51 Foreign: \$61
Student: \$31 (print, in-state)
Online only: \$37
Print w/online \$65

PO Box 100
224 4th St. NE,
Staples, MN 56479
218-894-1112
www.staplesworld.com
 Visa - MC - Discover

Nature available all around

Surrounded by wetlands, forests and prairies, the Staples and Motley areas have prime spots for bird watching and other outdoor activities.

Options include wildlife management areas operated by the Minnesota DNR, many spots along the Crow Wing

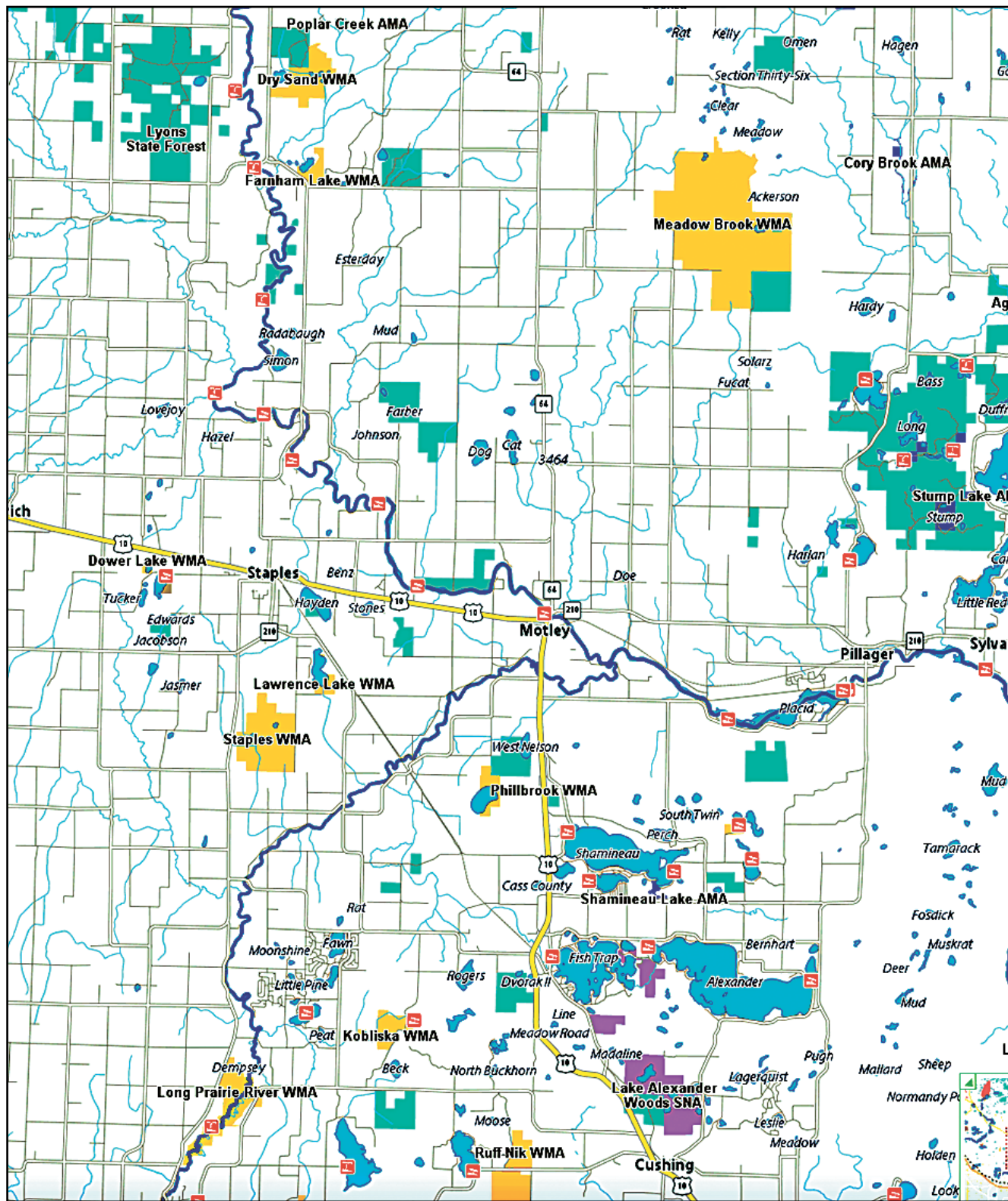
River or one of the parks in the area.

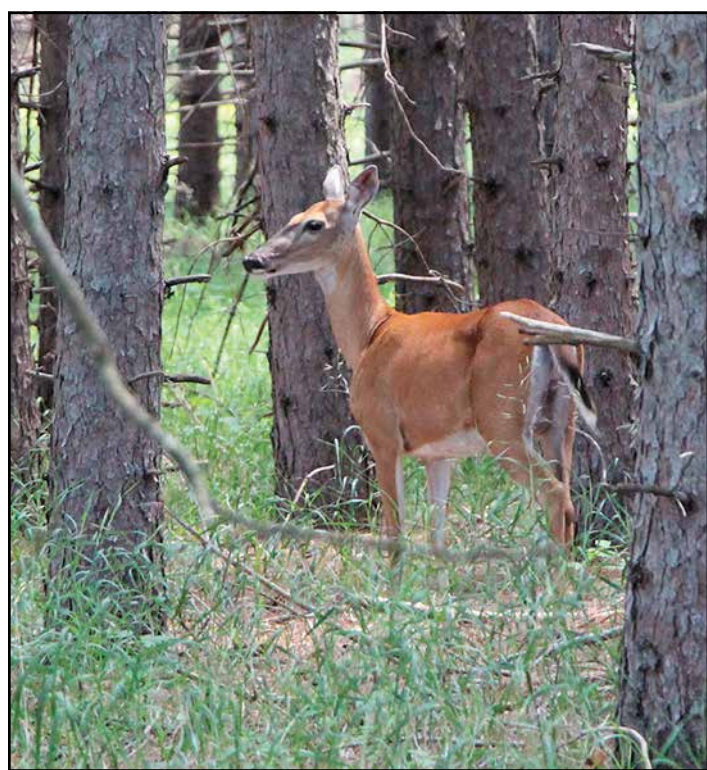
See the map below, from the DNR's Recreation Compass, to find wilderness areas for you. Wildlife management areas are in yellow, state forests are teal.

Other nature areas include McGovern Park along the Crow Wing River or just north of Staples, Old Wadena County Park and Cottingham Park north of Staples.

er just north of Staples, Old Wadena County Park and Cottingham Park north of Staples.

Besides bird watching, many of these natural areas can be used for hiking, fishing, hunting, and snowshoeing.





Nature watching

Wildlife abounds in the area.



Motley shopping

Specialty shops along Highway 10



Motley Americana nostalgia

Interesting shopping places can be found in Motley. The city has developed an active business district along Highway 10, with specialty shops, hardware store, a gift shop, antique stores, restaurants and bars.



Veterans Memorial Park in Motley

Pictured above at Veterans Memorial Park in Motley are members of the Motley American Legion Post #124.



Sprinkle and Spout Garden Club



117 Hwy 10 S, Motley, MN
218-352-6366

Hours: Mon.-Fri, 8 a.m.-6 p.m.
Sat., 8 a.m.-5 p.m. Sun., 10 a.m.-2 p.m.

COUPON

**** FREE ****
1/2 Lb. Salmon
Nuggets

With \$10 purchase and this coupon



Locations in Motley and Baxter
218-352-2110

www.moreysmarkets.com

Visitors Guide 2020

COUPON

Pillsbury State Forest offers trails, lakes

Pillsbury State Forest, located in Cass County, is the oldest state forest in Minnesota and features over 14,000 acres of pristine trails, as well as lakes, ponds and campsites.

The trail system is especially popular with equestrians and mountain bikers during the summer and cross-country skiers in the winter. In the fall, the forest is the place to be if you're a grouse hunter.

Pillsbury State Forest is located one mi. east of Pillager on Hwy 210, north on 33rd Ave., which becomes Pillsbury Forest Rd.

Once at the forest, a number of recreational facilities are available, including the Walter E. Stark Horse Assembly Area, Rock Lake Campground and Day-Use Area, Shafer Lake and Green Bass Lake.

If you enjoy horseback riding but don't own your own horse, be sure to check out Outback Ranch, located within Pillsbury State Forest just a few miles outside of Pillager. Trail rides and sleigh rides are available all year 'round.

A variety of wildlife can be found in the forest, including beaver, deer, bears

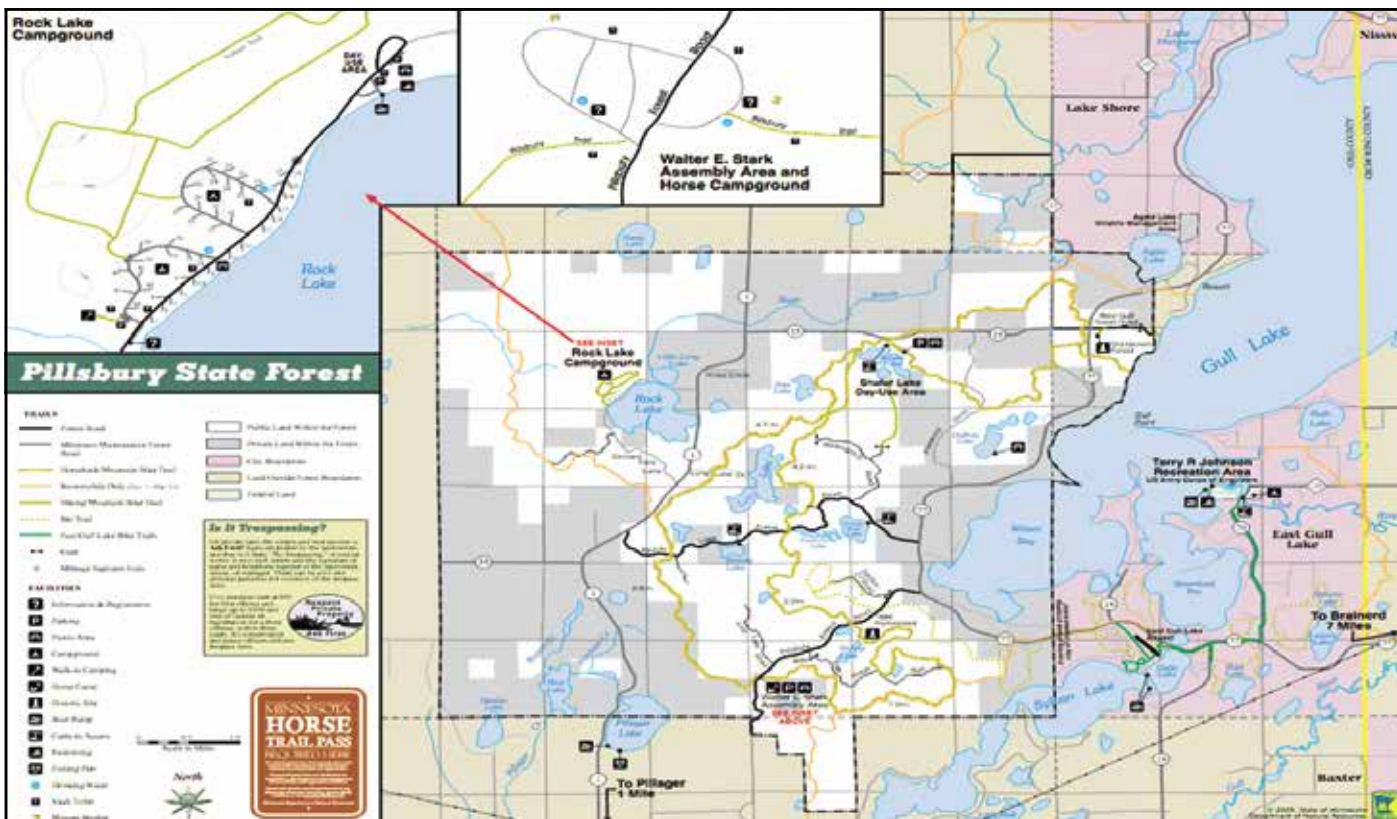


and numerous wildflowers. The forest is also home to several varieties of trees, which in the fall produce a kaleidoscope of colored leaves.

More information about Pillsbury

State Forest can be found at the Minnesota Department of Natural Resources' website.

Outback Ranch in rural Pillager offers trail rides throughout much of the year. The ranch is located in the Pillsbury State Forest and horseback riders report seeing a variety of wildflowers, meadows, trees and birds while on the trails.



The Minnesota DNR map of Pillsbury State Forest.

Worship

Staples

Staples Alliance Church

1512 8th Street NE
Staples, MN 56479
218-894-2891

www.staplesalliance.org

Assembly of God

914 3rd Ave. NE
Staples, MN 56479
218-894-1081

www.staplesag.org
staplesmnag@gmail.com

Church of Christ

27343 490 Street
Staples, MN 56479
218-894-2609

stapleschurchofchrist@gmail.com
stapleschurchofchrist.org

Congregational Church, UCC

204 5th Street NE
Staples, MN 56479
218-894-2571

Faith Lutheran Church

430 12th Street. NE
Staples, MN 56479
218-894-1546

faithlutheranstaples@gmail.com
www.faithlutheranchurch.org

Sacred Heart Church

310 4th Street NE
Staples, MN 56479
218-894-2296

sheart@staplesnet.com

Seventh Day Adventist Church

421 Dakota Ave. SE
Staples, MN 56479
218-894-0033

Thomastown Covenant

15940 251st Ave.
Staples, MN 56479
218-894-3923

www.thomastownchurch.com

Trinity Lutheran Church

1000 4th Street, NE
Staples, MN 56479
218-894-2372
trnty3n1@arvig.net

United Methodist Church

310 5th Street NE
Staples, MN 56479
218-894-2248

sumc@arvig.net
www.staplesuntiedmethodist.org

Aldrich

Balsamlund Lutheran Church

19550 490th Street
Aldrich, MN 56434
701-261-2394

Cushing/Lincoln

Bethany Lutheran Church

25430 Bison Rd.
Cushing, MN 56443
320-749-2140

www.bethanylutherancushing.org

Lincoln Evangelical Free Church

1354 320th St.
Cushing, MN 56443
218-575-2449

don@lincolnefree.org
www.lincolnefree.org

Cushing Baptist Church

26298 Bear Rd.
Cushing, MN 56443
320-749-2583

Leader

Swan Valley Lutheran

7546 State Rd. 64 SW
Motley, MN 56466
218-397-2470

Oylen

Oylen Alliance Church

Cty. Rds. 7 and 9
Oylen, MN
218-472-3316

Hope Chapel

18412 Co. Rd. 7
Verndale, MN 56481
218-445-5643
218-472-3316

Motley

Motley Free Methodist Church

33 Wellwood St. E
Motley, MN 56466
218-352-6888

pastorjim05@brainerd.net
www.motleyfreemethodistchurch.com

St. John's Lutheran Church

497 3rd Ave. South
Motley, MN 56466
218-352-6399

stjohnsmotley@brainerd.net

St. Michael Catholic Church

1st Street and Birch
Motley, MN 56466
218-894-2296

sheart@staplesnet.com

United Methodist Church

847 3rd Ave. S. Po Box 119
Motley, MN 56466
218-352-6466

www.motleyumc.net

Pillager

First Evangelical Lutheran Church

717 River Street South
Pillager, MN 56473
218-746-3775

www.firstlutheranpillager.net

Casino Assembly of God Church

N. of Motley, Hwy. 64, E.
on Cty 34 to Cty. 104
218-746-3839

www.casinoaog.com
casinoaog@brainerd.net

First Baptist Church

903 River Street South
Pillager, MN 56473
218-746-3768

curious@fbcpillager.com
www.fbcpillager.com

Resorts in Lincoln Lakes area

The Lincoln Lakes area, located south of Motley, is home to Lake Alexander, Lake Shamineau, Fish Trap Lake and Crookneck Lake.

With its rolling hills, tall pines and crystal clear waters, the Lincoln Lakes area has become a popular destination for year round residents as well as seasonal vacationers.

Listed below are some of the resorts located in the Lincoln Lakes area.

Shamineau Acres Resort

Nestled on the northwest corner of Lake Shamineau in rural Motley is Shamineau Acres Resort, owned and operated by Lyn and Pam Carter since 1993.

"We offer all the ingredients that say kick-back, relax and have the time of your life that will create wonderful memories forever," the Carters posted on their website.

Enjoy swimming and fishing in the spring-fed lake, listen to the cry of the loon and the breeze rustling through the tall pines; and relax with a book down at the sandy beach or in the comfort of your cabin.

There are seven cabins available at Shamineau Acres Resort. Each includes air-conditioning, Dish TV, charcoal grills, fire ring, a deck and picnic table. All of the rental units feature 'up north' cabin decor. There are 17 seasonal sites available to rent as well.

In addition, there is a playground for children on the premises, private docks and plenty of space for playing softball, tetherball, volleyball or basketball.

Shamineau Acres Resort is located at 34824 Aztec Rd., approximately 6.7 miles south of Motley. It opens for the season on fishing opener and closes each year in mid-October. For more information, call 218-575-2254 or visit their website at www.shamineauacres-resort.com.

Fish Trap Camping and RV Resort

If you're looking for a place to relax, spend quality time with your family and enjoy the beauty of the northwoods, Fish Trap Camping and RV Resort is the place for you.

The resort is located on the shores of Fish Trap Lake in rural Cushing, encompassing 86 acres. According to the Lincoln Lakes Area Business Association, "Fish Trap offers beautiful camping sites with towering pines and picturesque hiking trails. Whether you would like to relax by the pool, walk the nature trails, or try your luck with the

fish, Fish Trap Camping and RV Resort offers the perfect vacation."

Owned by Jeff and Julie Hardy since 2012, Fish Trap Camping and RV Resort has been a get-away destination for almost 50 years.

Guests enjoy free use of canoes, kayaks and paddle boats for exploring Fish Trap Lake; and there are two heated swimming pools on the premises to enjoy as well. Pontoon boats are available to rent. Other amenities include tetherball, basketball, horseshoes, shuffleboard, wagon rides and a pavilion, where potluck meals are often served.

Fish Trap Lake Camping and RV Resort is located at 30894 Fish Trap Lake Dr., Cushing, MN, 56443. For more information, call them at 218-575-2603, email JulieHardy@FishtrapFun.com or visit their website at www.fishtrap-fun.com.

SweetWater Resort

Situated on Fish Trap Lake, SweetWater is known as "the little resort with the BIG experience." It is owned by Chuck and Cindy Brey.

According to their brochure, vacationers are encouraged to, "Relax summer or winter and build your family memories at our small family/dog friendly resort. Enjoy clean, modern, air-conditioned/heated cabins which are fully furnished for your housekeeping needs."

Since purchasing SweetWater in 2001, the Breys have doubled the size of the resort and updated the cabins; built a lovely 'Healing Gardens' area (featuring hundreds of flowers and hostas);

and added numerous organized activities for 'kids ages three - 99.'

There are seven units available for rent at the resort, four with a lakeside view and all with cozy, knotty pine interiors. The units offer anywhere from two to six bedrooms and all are just a short walk from the lake.

SweetWater Resort is located at 30174 Azure Rd. in Cushing. For more information, call 1-800-601-3474 or email sweetwaterresort@hotmail.com. Additional information can be found online at www.sweetwaterresort.com.

Campfire Bay Resort

Campfire Bay Resort is the place to go if you're looking for a beautiful lakeside setting that offers both relaxation and a variety of activities for the entire family.

Located on Fish Trap Lake in rural Cushing, Campfire Bay Resort has been a vacation destination since 1947. It's current owners, Brian and Heather Sams, bought it in 2002.

Since owning the resort, the Sams have made several physical changes to

Continued on page 29



The Minnesota lake experience can't be matched

the property, including more than doubling the shoreline and constructing new cabins. They've also added a lodge where there's a coffee and ice cream cafe, gift shop, game room, laundromat and gathering room; and a Rec Center, built in 2016, that boasts of a gym, state of the art fitness room, showers, day spa and more.

Campfire Bay Resort invites you to relax in their charming, shoreline, lake level cabins. They offer one, two, three and four bedroom cabins, ranging from 15' to 150' from the shores of Fish Trap Lake. Most of the cabins have decks and all have lawn/patio furniture and charcoal grills. Wireless internet is available throughout the resort a well.

Vacationing at Camp Fire Bay Resort is not limited to the summer months. Fish Trap Lake is a popular destination for ice fishing; and winter sports enthusiasts also appreciate the snowmobile trails in the Lincoln Lakes area.

Campfire Bay Resort is located at 31504 Azure Rd. in Cushing, just off U.S. Hwy 10 on Cty Rd. 20.

For more information, call 218-575-2432, or visit their website at www.campfirebayresort.com.

Raspberry Ridge

Raspberry Ridge, a cabin located in rural Motley, is a rental retreat home perfect for your crafting, small group or specialty get away. Owned by Lorna Klefsaas since 2003, Raspberry Ridge is located in a quiet, wooded area that offers a tranquil get-away.

The cabin is a three story walk-out. The top, lofted floor consists of four bedrooms and two large bathrooms. Each bedroom has twin beds and two of the bedrooms have a queen sized bed. This area sleeps 16 guests.

The second floor houses a full kitchen, dining room, living room with entertainment center, a deck and four season porch with a massage chair.

The walk-out level has a bathroom, a utility room and a spacious workroom. There are 16 five foot tables, each with their own adjustable chair. The work room is outfitted with many tools including: a die cut machine, computer, and laser printer. There are also trimmers, punches, scissors, setters, idea books and templates. The workroom also features two TVs equipped with surround sound, a DVD player and DirectTV.

Raspberry Ridge is set on 18 acres of wooded land located approximately six miles south of Motley just off Highway 10 on Aztec Rd. For more information,

visit www.raspberryridgecabin.com or call 218-371-0450.

Camp Shamineau

Camp Shamineau has been a presence in the Lincoln Lakes area for over 60 years, offering a variety of activities as well as spiritual guidance for people of all ages.

Located just south of Motley on beautiful Lake Shamineau, the Christian camp is open year round, with each season offering campers a host of fun and memorable experiences. Herb Bloomquist serves as Executive Director.

Camp Shamineau is known for its picturesque waterfront, wooded trails, climbing wall and gym; and ranch, which offers horseback trail rides and hay rides. A team of Belgian draft horses was recently added at the camp. The high ropes course is also a favorite activity, complete with side by side zip lines.

Camp Shamineau is open to the public on these select dates:

- Open Climb: Climbing wall and gym open.
- Community Beach Day: The surrounding community is invited to enjoy the lake and the camp's waterfront. All ages welcome.
- Community Christmas: This free event is open to the public.

Camp Shamineau is located at 2345 Ridge Road, just south of Motley. For

more information about the camp and its upcoming schedule of events, visit www.shamineau.org or call 218-575-2240.

Auger's Pine View Resort

The family-owned Auger's Pine View Resort has been a vacation destination for over 45 years.

Located along Lake Shamineau, the resort offers people a true 'up-north relaxing get-away vacation' in the Lincoln Lakes area.

Several two, three and four-bedroom cabins available, all of which are close to the lake and offer beautiful views of its crystal clear water.

There are a number of amenities available to vacationers, including renting pontoons, kayaks and motor boats. On rainy days, stop by the lodge to play pool, browse the gift shop, watch television or sample the variety of ice cream available. The playground area has swings, a slide and a place to play basketball; and there are also water activities down at the beach, including a water slide and trampoline.

For people who enjoy fishing, Lake Shamineau is abundant with walleye, northern pike, largemouth bass, crappie and other types of panfish.

For more information about Auger's Pine View Resort, call 1-888-705-LAKE (5253) or visit the website at www.augerspineview.com.



Organizations

- All Veterans and Community Park**
Huck Holst218-296-2469
www.staplesmnveteranspark.org
- American Legion Auxiliary, Staples**
Arlene Grover218-894-2254
- American Legion Post, Motley**
Tom Ladwig.....320-260-9361
- American Legion Post, Pillager**
Elbert Rhett.....218-746-3945
- Barn Quilts of Central Minnesota**
.....218-894-2906
http://barnquiltsmn.org
- Bicycle Club**
Bob Hamann.....218-894-3139
www.lakesareabikeclub.com
- Boy Scouts, Cub Scouts**
Jace Carlson218-330-9408
email:JHZJG99@gmail.com
- CARE Ministries**218-894-1723
- Central Minnesota Boys Choir**
Sheila Edin218-894-3576
www.centralmnboyschoir.com
- Crisis Line and Referral**
.....218-828-4515
- Crow Wing River Basin Forage Council**
Chuck Horsager218-639-4225
- Diamond Club**
Darren Holst.....218-639-9662
www.diamondclub.org
- Dollars for Scholars**
Bryan Winkels.....218-296-2425
- England Prairie Pioneer Club**
Shelly Dukowitz.....218-296-2611
www.english-prairie.org
- FFA/FFA Alumni**
Joe Ramstad218-894-5414
joe.ramstad@isd2170.k12.mn.us
- Five Wings Arts Council**
Mark Turner218-895-5660
www.FWAC.org
- Foster Grandparent Program**
Jon Knopik320-229-4593
- Friends of Staples Public Library**
Gloria Palmer.....218-894-1204
www.griver.org
- Girls Choir, Colla Voce**
Kevin Nelson.....218-895-5046
- Girl Scouts**
Nancy McMullen320-247-4562
girlscoutslp.org
- Heritage Club**
Kate Skogstad/JoAnn Loidolt
.....218-352-6284
- Historical Society, Motley**
Bernice Thompson218-352-6384
- Historical Society, Staples**
Tom Kajer218-894-2906
- JCI Staples**
Paige Lenk.....218-414-0912
- Kinship Partners**
Kristi Carlson.....218-454-8012
staples@kinshippartners.org
- Lake Country ATV Riders**
Paul & Jen DeBoer.....218-640-5679
lakecountryatv.utv@gmail.com
- Lakes Area Pregnancy Support**
.....218-295-5200
www.lakesareapregnancy.org
- Lakewood Health System Foundation**
Heidi Chapman218-894-8503
www.lakewoodhealthsystem.com
- Lamplighter Community Theatre**
Chad Grotesch320-282-3820
- LEAP (Leadership, Engagement, Advocacy & Positiveness)**
Renee Kroll.....480-678-5926
- Lincoln Area Business Association**
Herb Bloomquist.....320-232-8365
www.lincolnlakes.com
- Lions Club, Leader**
Neil Malcore.....218-472-3316
- Lions Club, Motley**
Ed Jordahl218-352-6116
- Lions Club, Scandia Valley**
Dan Carlson.....218-575-2196
- Lions Club, Staples '93**
Amy Leidenfrost218-894-1935
- Lions Club, Staples Host**
Frank Leidenfrost.....218-894-1935
- Living Legacy Gardens**
Tammy Rick218-296-2795
trick@clcmn.edu
- Meals on Wheels**
Diane Anderson218-894-2556
Or218-894-1709
- Ministerial Association**
Carl Larson.....218-894-1546
- Minnesota Honor Society**
Mike Schmidt218-894-2431
- Motley Area Food Shelf**
.....218-352-6344
- Motley Fair Board**
Rhonda Amundson.....218-851-0883
- Motley Volunteer Fire Department**
.....218-352-6200
- Old Wadena Society**
Jamie Robertson218-371-6403
oldwadenarendevous.org
- Pets Abandoned Wanting Support (PAWS)**218-639-7297
- Piecemakers of Staples Quilt Club**
Lisa Kajer.....218-894-2906
- Pillager Fair Board**
Donna Klimek218-820-3261
www.pillagerfair.com
- Project Together**
Bryan Tollefson.....218-639-7292
btollefson@fed.k12.mn.us
- Red Hat Society**
Judy Marte218-894-2634
- Rotary Club, Staples**
John Kopp.....218-894-3647
- Senior Citizens, Staples**
Kathy Crews218-894-2256
- Snowmobile Club, Todd Cty. Trail**
Bernard Mumm218-894-1835
- Sprinkle and Sprout Garden Club**
Marilyn Hall.....218-352-6670
- Staples Amateur Baseball Assoc.**
Chris Etzler218-296-1419
- Staples Area Food Shelf**
.....218-894-1935
- Staples Area Men's Chorus**
Kevin Olsen218-296-2430
www.staplesmen.org
- Staples Area Women's Chorus**
Joyce Anderson.....218-894-1574
www.stapleswomen.org
- Staples Motley Area Community Foundation**
Katie Heppner218-929-3015
www.staplesmotleyfoundation.org
- Staples Bike Club**
Bryan Amiot.....218-821-9211
www.staplesbikeclub.com
- Staples Volunteer Fire Department**
Scott Braith218-894-2550
- Staples Motley Area Arts Council**
Dawn Timbs612-910-9645
www.staplesmotleyarts.org
- Staples Chamber of Commerce**
Rachel Johnson, president
stapleschamber@gmail.com
- Staples Motley Basketball Club**
Deanne Schimpp.....218-296-3878
- Staples Motley Beyond Poverty**
Gail Honek.....218-894-1105
staplesmotleybeyondpoverty.org
- Staples Softball Association**
Leo Carlson218-296-2026
- Staples Motley Music Boosters**
Kevin Nelson218-895-5046
- Sustainable Farming Assoc. of Central MN**
Michael Dagen 844-922-5573 ext. 704
sfa-mn.org/central
- Wahoo Valley Area MDHA**
Walt Wiese218-640-5423
- Whiskey Creek Film Festival**
Jamie Robertson218-371-6403
whiskeycreekfilmfestival.org
- Women in Philanthropy**
Heidi Chapman.....218-894-8503
WIP@lakewoodhealthsystem.com
- Staples Motley Area Women of Today**
Nicky Anderson.....507-381-0786
- Wrestling Club**
Ken Christensen218-820-7864



Christine Albrecht, MD
Family Medicine Provider

We're here.

It's more than just a job, it's a commitment.

Our providers continue to work tirelessly to provide you and your family with safe, effective care when you need it. Life doesn't stop because of COVID-19 and neither do we. As we all look to a "new normal," know that Lakewood is here leading the way with safe, convenient care options when you need us.

To schedule an in-person or virtual video visit, call 218-894-1515.



lakewoodhealthsystem.com



*"Home is where love resides, memories are created,
friends belong and laughter never ends"*

Author unknown



We realize your home is your most valuable asset and understand the stress associated with purchasing or refinancing a home.

Guiding you through the entire process, assuring you are protected.



121 4th Street NE, Staples, MN 56479 | 218-541-5120

13954 Cypress Drive, Suite 200 Baxter, MN 56425 218-829-4450 | www.elitetitle.co